



HARBORTOUCH

HOSPITALITY
REPORTS



▪ TABLE OF CONTENTS

REPORT	PAGE
Introduction	1
SALES	
Sales Report Screen	2
Restaurant Financial Overview	3
Financial Overview - Weekly Commitment Report	4
Daily Sales and Labor Summary	6
Sales by Employee	7
Hourly Sales	8
Menu Item Sales	9
Choice Sales	10
Discounts by Class by Type Summary	11
Discounts by Class by Item Summary	13
Seating Performance	16
LABOR	
Labor Reports Screen	17
Labor Reports	18
PRODUCT MIX	
Product Mix Screen	19
Basic Product Mix Report	20
Other Product Mix Reports	21
MENU	
Plain View Menu	22
View Choice Sets with Menu Items	23
View Menu by Name with Screen Categories	24
Other Menu Reports	25
AUDITING	
Auditing Report Screen	26
Cash Paid Out by Day	27
Tender Type	28
Detailed Tickets	30
Tax Removals	31
Other Auditing Reports	32
CUSTOMER	
Sales	33
Payments Summary	34
Other Customer Reports	35
TRANSACTION	
Transaction Reports	36
SECURITY	
Security Reports	37



Get a top level view of your business with advanced reporting

Harbortouch Hospitality offers a suite of over 80 in-depth reports in various categories:

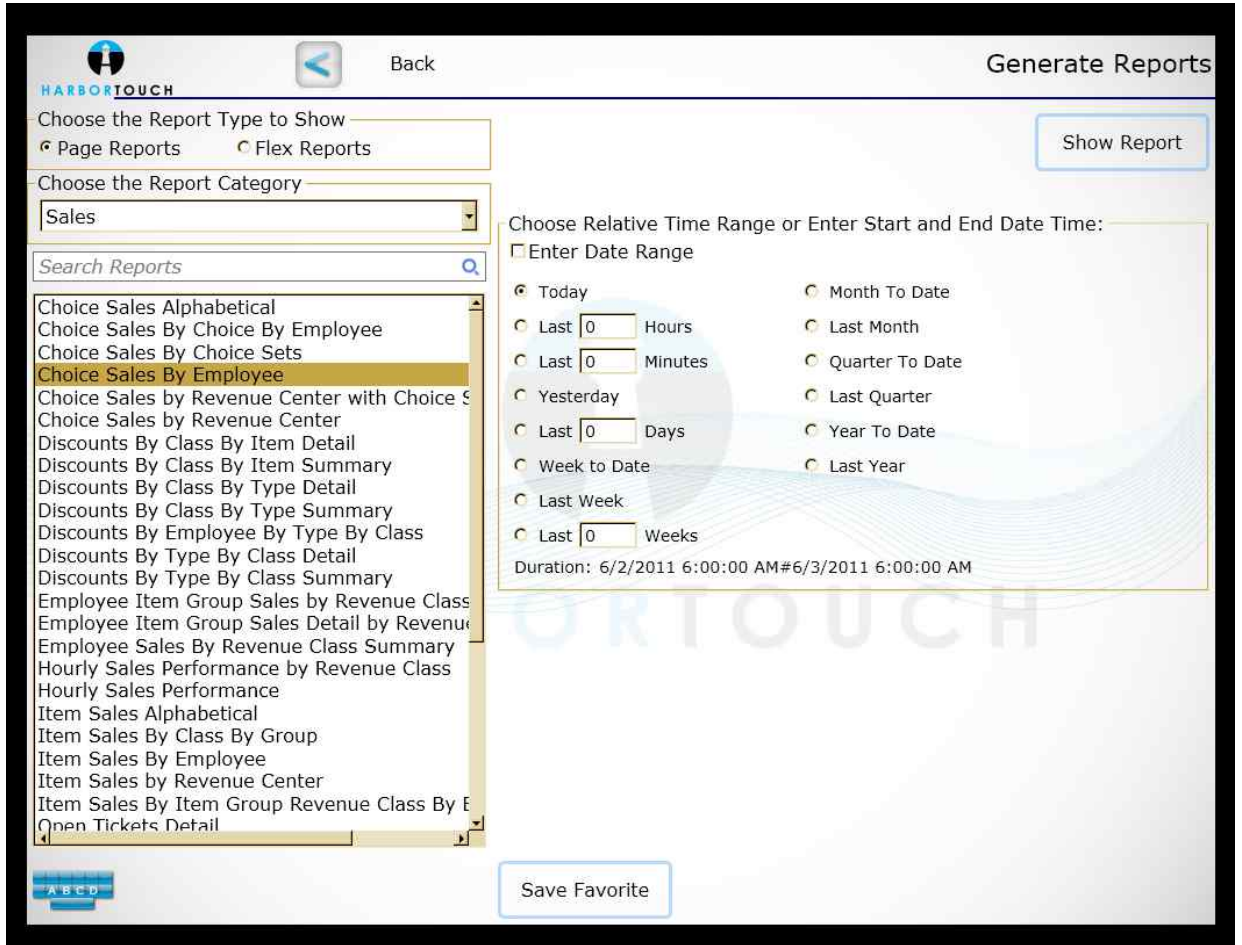
- **Sales**
- **Labor**
- **Menu**
- **Product Mix**
- **Auditing**
- **Customers**
- **Transaction**
- **Security**

Each Harbortouch report can be further customized to show hourly, daily, weekly, quarterly, year to date and specific date ranges. The simple and easy-to-use Harbortouch software allows even the novice POS owner to generate advanced reports. This comprehensive reporting functionality allows today's restaurateur to make key management decisions based on real-time data.

- Access to 80+ built-in reports
- Database stores all information permanently
- Create reports from data with unlimited history
- Instantly access daily reports
- Print daily summary on receipt printers or review on screen
- Export reports as PDF, Excel, .csv, .rtf or other formats

A sampling of some of the most popular reports are included in this document.

Sales reports provide a detailed overview of your restaurant's sales performance and can be broken down by various parameters.



RESTAURANT FINANCIAL OVERVIEW

See a top level overview of entire restaurant's sales performance.

Restaurant Financial Overview

Parameters: 6/1/2011 6:00:00 AM#6/2/2011 6:00:00 AM,-1

GrossSalesby RevenueClass		Discounts		CashDeposit		
Food	\$958.33	ManualDiscounts		+ CashIn	\$0.00	
Non Alc Bev	\$42.75			- CashOut	\$0.00	
= GrossSale	\$1,001.08	Total Manual		+ CashReceived	\$843.88	
Total GrossSale	\$1,001.08	Total Discounts		- Tips	\$42.88	
Auto Discounts	\$0.00			- ChangeGiven	\$0.00	
Total GrossItems	\$1,001.08			+ Tip Reduction	\$0.00	
(incl. Auto Discounts)				= CashDeposit	\$801.00	
Transactionsby TenderType				+ Checks	\$0.00	
Count	TenderType	Amount		= Total Deposit	\$801.00	
2	Amex	\$55.00		Net Incomeby RevenueClass		
54	cash	\$843.88		Food	\$958.33	
3	MasterCard	\$56.95		Non Alc Bev	\$42.75	
9	VISA	\$176.96		SalesIncome	\$1,001.08	
Total		\$1,132.79		Total Net Income	\$1,001.08	
VoidsbY Type		Net Salesby Day Part		Taxes		
Count	Void Type	Amount	Breakfast	\$278.25	NYC SalesTax	\$88.83
1	Testing	\$2.95	Lunch	\$722.83	Total Tax	\$88.83
Total	1	\$2.95	Net Sales	\$1,001.08	Net + Taxes	\$1,089.91
		Total Net Sales		Tips		
				autogratuities		\$0.00
				tips		\$42.88
				Total Tips		\$42.88
				Total Receipts		\$1,132.79

CapturedTips % Net:	\$4.28	HeadCount:	140	Net per Head:	\$7.15	OpenTickets:	19
CapturedTips % Gross:	\$4.28	ClosedTickets:	66	Grossper Head:	\$7.15	OpenTotal:	\$509.00
Grossper Ticket:	\$15.17	Net per Ticket:	\$15.17	Labor %:	244.48		

Actual CashDeposit	CashOver/Short	PreparedBy	ApprovedBy
_____	_____	_____	_____

View a summary of week's sales performance.

Weekly Commitment Report

Parameters: 1/1/2011 6:00:00 AM#4/1/2011 6:00:00 AM

Date Range: 3/25/11 to 3/31/11	3/25/11 FRI	3/26/11 SAT	3/27/11 SUN	3/28/11 MON	3/29/11 TUE	3/30/11 WED	3/31/11 THU	WTD
Sales Journal								
Net Sales								
Gross Sales								
Beer	2321.00	2275.00	234.00	276.00	277.00	363.00	791.00	6537.00
Food	15417.65	22167.30	14754.82	7612.59	9505.65	9386.07	11208.98	90553.06
GIFT CARD	100.00	125.00	50.00	40.00	25.00	250.00	.00	590.00
Liquor	6247.00	3947.00	736.00	736.00	679.00	675.00	2873.00	15893.00
Non Alc Bev	1074.88	1687.00	1184.26	631.45	723.41	724.09	821.88	6846.97
Wine	616.00	902.00	430.00	277.00	407.00	354.00	397.00	3383.00
Total Gross Sales:	25776.53	31103.30	17389.08	9573.04	11617.06	11752.16	16091.86	123303.03
Discounts								
100% Comp	.00	.00	-46.90	-18.60	.00	.00	.00	-65.50
EmployeeDiscount	-10.46	-15.60	.00	-7.10	-5.66	.00	.00	-38.82
HH 2OFF	-54.00	.00	.00	-66.00	-20.00	-18.00	-34.00	-192.00
HH 3OFF	-36.00	.00	.00	-27.00	-30.00	-9.00	-12.00	-114.00
HH App	-29.65	.00	.00	-58.40	-48.50	-52.45	-27.70	-216.70
HH Cocktail	.00	.00	.00	.00	.00	.00	-6.00	-6.00
OPENDISCOUNT	.00	-1.50	-12.00	-3.00	.00	.00	.00	-16.50
PoliceDiscount	.00	-10.95	-10.04	.00	.00	-3.22	.00	-24.21
Total Discounts:	-130.11	-28.05	-68.94	-180.10	-104.16	-82.67	-79.70	-673.73
Total Net Sales:	25646.42	31075.25	17320.14	9392.94	11512.90	11669.49	16012.16	122629.30
Taxes								
Sales Tax								
NYC SalesTax	1714.16	2286.16	1483.08	774.43	989.65	983.04	1207.18	9437.70
Total Sales Tax:	1714.16	2286.16	1483.08	774.43	989.65	983.04	1207.18	9437.70
Total Taxes:	1714.16	2286.16	1483.08	774.43	989.65	983.04	1207.18	9437.70
Payments								
Payment Types								
Amex	2609.77	3951.67	2621.18	1463.15	1188.95	1548.34	1521.64	14904.70
cash	17756.23	19464.14	8943.61	5345.82	7327.64	7468.35	11480.56	77786.35
Discover	283.50	180.88	623.90	376.99	230.49	75.01	134.71	1905.48
gc-sale	52.00	93.00	210.96	87.60	10.62	48.28	.00	502.46
MasterCard	3388.19	4022.52	2315.24	1141.70	1784.52	1686.25	1422.25	15760.67
VISA	4552.65	7388.32	5263.56	2378.70	2729.41	2563.01	3401.30	28276.95
Total Payment Types:	28642.34	35100.53	19978.45	10793.96	13271.63	13389.24	17960.46	139136.61
Total Payments:	28642.34	35100.53	19978.45	10793.96	13271.63	13389.24	17960.46	139136.61
Over/Short								
Over/Short								
Over/Shor	.00	.00	.00	.00	.00	.00	.00	.00
Total Over/Short:	.00	.00	.00	.00	.00	.00	.00	.00
Total Over/Short:	.00	.00	.00	.00	.00	.00	.00	.00

Labor Statistics
(Job Group)
(Job Type)

View a summary of week's sales performance.

Date Range: 3/25/11 to 3/31/11	3/25/11 FRI	3/26/11 SAT	3/27/11 SUN	3/28/11 MON	3/29/11 TUE	3/30/11 WED	3/31/11 THU	WTD
Labor Statistics								
(Job Group)								
(Job Type)								
Bartende	37.12	27.88	14.29	13.48	14.40	14.11	22.57	143.86
Host	28.67	26.43	30.54	18.36	65.26	38.43	39.52	247.22
Manager	5.70	.00	.00	56.20	88.06	32.11	23.63	205.70
Owner	14.32	12.33	.00	23.69	36.87	18.72	2.93	108.85
SERVER	226.22	222.34	141.40	124.81	143.44	140.78	162.03	1161.01
Total (Job Type):	312.03	288.98	186.23	236.55	348.03	244.15	250.68	1866.64
Total (Job Group):	312.03	288.98	186.23	236.55	348.03	244.15	250.68	1866.64

DAILY SALES & LABOR SUMMARY

Compare the day's sales and labor costs.

Sales and Labor Summary

Parameters: 6/1/2011 6:00:00 AM#6/2/2011 6:00:00 AM

	Total Regular	\$2,049.61	GrossSales	\$1,001.08		
	Total OT Pay	\$397.79	Net Sales	\$1,001.08		
	GrandTotal Pay	\$2,447.40	Labor Ratio	244.47		
Job	Regular Pay	OT Pay	Gross Sales	Comps	Net Sales	Labor %
Admin	\$.00	\$.00	\$.00	\$.00	\$.00	.00
Host	\$85.74	\$48.00	\$.00	\$.00	\$.00	.00
Manager	\$.00	\$.00	\$.00	\$.00	\$.00	.00
Owner	\$.00	\$.00	\$.00	\$.00	\$.00	.00
SERVER	\$106.13	\$.00	\$278.25	\$.00	\$278.25	38.14
Breakfast	\$191.86	\$48.00	\$278.25	\$.00	\$278.25	86.20
Admin	\$.00	\$.00	\$.00	\$.00	\$.00	.00
Bartende	\$21.20	\$.00	\$.00	\$.00	\$.00	.00
Host	\$183.56	\$72.00	\$60.51	\$.00	\$60.51	422.34
Manager	\$.00	\$.00	\$.00	\$.00	\$.00	.00
Owner	\$.00	\$.00	\$.00	\$.00	\$.00	.00
SERVER	\$334.24	\$.00	\$662.32	\$.00	\$662.32	50.46
Lunch	\$539.00	\$72.00	\$722.83	\$.00	\$722.83	84.52
Admin	\$.00	\$.00	\$.00	\$.00	\$.00	.00
Bartende	\$30.00	\$.00	\$.00	\$.00	\$.00	.00
Host	\$192.00	\$72.00	\$.00	\$.00	\$.00	.00
Manager	\$.00	\$.00	\$.00	\$.00	\$.00	.00
Owner	\$.00	\$.00	\$.00	\$.00	\$.00	.00
SERVER	\$360.00	\$.00	\$.00	\$.00	\$.00	.00
Dinner	\$582.00	\$72.00	\$.00	\$.00	\$.00	.00
Admin	\$.00	\$.00	\$.00	\$.00	\$.00	.00
Bartende	\$40.00	\$.00	\$.00	\$.00	\$.00	.00
Host	\$242.70	\$115.95	\$.00	\$.00	\$.00	.00
Manager	\$.00	\$.00	\$.00	\$.00	\$.00	.00
Owner	\$.00	\$.00	\$.00	\$.00	\$.00	.00
SERVER	\$454.05	\$89.84	\$.00	\$.00	\$.00	.00
Late Night	\$736.75	\$205.79	\$.00	\$.00	\$.00	.00
Grand Total	\$2,049.61	\$397.79	\$1,001.08	\$.00	\$1,001.08	244.47

Identify the most productive employees.

Employee Item Group Sales by Revenue Class

Parameters: 6/1/2011 6:00:00 AM#6/2/2011 6:00:00 AM

Revenue Class	Qty.	Item Group	Net Sales	User %	Rev. Class %	Total %
Food						
Amanda						
	2	Breakfast Omelette	\$16.65	83.04%	1.2%	1.13%
	2	No Item Group	\$3.40	16.95%	0.24%	0.23%
Subtotal for Amanda:			\$20.05		1.44%	1.36%
angelina d						
	2	Breakfast Omelette	\$21.21	8.25%	1.52%	1.44%
	47	No Item Group	\$235.85	91.74%	16.99%	16.06%
Subtotal for angelina d:			\$257.06		18.52%	17.5%
ANN						
	1	Breakfast Omelette	\$9.98	16.62%	0.71%	0.67%
	5	No Item Group	\$39.10	65.13%	2.81%	2.66%
	1	Wraps	\$10.95	18.24%	0.78%	0.74%
Subtotal for ANN:			\$60.03		4.32%	4.08%
BEQ						
	1	Breakfast Omelette	\$9.48	19.21%	0.68%	0.64%
	5	No Item Group	\$39.85	80.78%	2.87%	2.71%
Subtotal for BEQ:			\$49.33		3.55%	3.35%
Carlos R						
	1	Breakfast Omelette	\$8.48	30.19%	0.61%	0.57%
	5	No Item Group	\$19.60	69.8%	1.41%	1.33%
Subtotal for Carlos R:			\$28.08		2.02%	1.91%
Danielle						
	4	Breakfast Omelette	\$34.92	27.85%	2.51%	2.37%
	1	Kid's Menu	\$6.95	5.54%	0.5%	0.47%
	17	No Item Group	\$60.35	48.13%	4.34%	4.1%
	2	Wraps	\$23.15	18.46%	1.66%	1.57%
Subtotal for Danielle:			\$125.37		9.03%	8.53%
JANETTE						
	1	Breakfast Omelette	\$8.73	3.59%	0.62%	0.59%
	2	Lunch Specials New	\$17.90	7.36%	1.29%	1.21%
	44	No Item Group	\$216.35	89.04%	15.59%	14.73%
Subtotal for JANETTE:			\$242.98		17.51%	16.54%
JANINE F.						
	34	No Item Group	\$220.95	100%	15.92%	15.04%
Subtotal for JANINE F.:			\$220.95		15.92%	15.04%

Determine which times of the day are the busiest.

Hourly Sales Performance

		Gross	Discount	Net	Covers	Gross CoversAvg.	Tickets
June							
	Wednesday						
	25	Breakfast Sp#1 Two Eggs	\$6.50	\$0.00	\$6.50	451282(id)	266331
	25	Breakfast Sp#9 Fast Bite Muffin	\$2.95	\$0.00	\$2.95	451282(id)	266331
	6:00		\$9.45	\$0.00	\$9.45	1	\$9.45
	45	Breakfast Sp#1 Two Eggs	\$6.50	\$0.00	\$6.50	451283(id)	266332
	101	Breakfast Sp#1 Two Eggs	\$6.50	\$0.00	\$6.50	451284(id)	266333
	101:2	Breakfast Sp#3 Western Omelette	\$7.70	\$0.00	\$7.70	451285(id)	266334
	101:3	Breakfast Sp#1 Two Eggs	\$7.00	\$0.00	\$7.00	451286(id)	266335
	101:4	Breakfast Sp#1 Two Eggs	\$4.50	\$0.00	\$4.50	451287(id)	266266
	101:5	Oatmeal With Ban-Strawberries	\$5.75	\$0.00	\$5.75	451288(id)	266337
	101:6	Oatmeal With Ban-Strawberries	\$5.75	\$0.00	\$5.75	451289(id)	266338
	101:7	Vegetarian Omelette (6 - 11)	\$7.95	\$0.00	\$7.95	451290(id)	266339
	22	Breakfast Sp#1 Two Eggs	\$4.50	\$0.00	\$4.50	451291(id)	266340
	22	Breakfast Sp#1 Two Eggs	\$5.50	\$0.00	\$5.50	451291(id)	266340
	13	Milk	\$2.25	\$0.00	\$2.25	451293(id)	266341
	13	Breakfast Sp#1 Two Eggs	\$6.50	\$0.00	\$6.50	451293(id)	266341
	7:00		\$70.40	\$0.00	\$70.40	10	\$7.04
	101:5	Coffee M-F	\$1.60	\$0.00	\$1.60	451288(id)	266337
	101:6	Coffee M-F	\$1.60	\$0.00	\$1.60	451289(id)	266338
	12	Breakfast Sp#1 Two Eggs	\$6.50	\$0.00	\$6.50	451294(id)	266342
	12	Breakfast Sp#1 Two Eggs	\$6.50	\$0.00	\$6.50	451294(id)	266342
	12	Breakfast Sp#3 Western Omelette	\$6.95	\$0.00	\$6.95	451294(id)	266342
	12	Breakfast Sp#6 Pancakes	\$4.75	\$0.00	\$4.75	451294(id)	266342
	24	Breakfast Sp#1 Two Eggs	\$4.50	\$0.00	\$4.50	451298(id)	266343
	55	Breakfast Sp#1 Two Eggs	\$6.50	\$0.00	\$6.50	451300(id)	266344
	55	Fruit Cup w/ Cottage Cheese	\$5.95	\$0.00	\$5.95	451300(id)	266344
	47	Breakfast Sp#1 Two Eggs	\$4.50	\$0.00	\$4.50	451301(id)	266345
	47	Breakfast Sp#6 Pancakes	\$6.35	\$0.00	\$6.35	451301(id)	266345
	47	Breakfast Sp#3 Cheese Omelette	\$6.95	\$0.00	\$6.95	451301(id)	266345

- Identify top selling items
- Sort by employee or view totals

Item Sales Alphabetical

Item	Menu Price	Quantity	Avg. Price	Gross Sales	Discounts	Net Sales
007	8.00	1	\$8.00	\$8.00	\$0.00	\$8.00
1/2 Roasted Chicken	13.95	27	\$13.95	\$376.65	\$0.00	\$376.65
1/2 Roasted Duck	15.95	4	\$15.95	\$63.80	\$0.00	\$63.80
10 Cane Rum	.00	1	\$8.00	\$8.00	\$0.00	\$8.00
16 oz. Cowboy Rib-Eye Steak	23.95	21	\$23.71	\$502.95	\$5.06	\$497.89
3 Olives	.00	13	\$8.23	\$107.00	\$0.00	\$107.00
A la Mode	1.95	12	\$1.95	\$23.40	\$0.00	\$23.40
Absolut	.00	94	\$8.07	\$759.00	\$0.00	\$759.00
Ahi Tuna	22.95	5	\$22.95	\$114.75	\$0.00	\$114.75
Alabama Slammer	8.00	2	\$8.00	\$16.00	\$0.00	\$16.00
Amaretto Di Sarrono	.00	11	\$10.00	\$110.00	\$0.00	\$110.00
Amaretto Sour	8.00	15	\$8.00	\$120.00	\$0.00	\$120.00
American Cheese Omelette	6.95	2	\$7.70	\$15.40	\$0.00	\$15.40
Americana Sliced Fresh Fruit Platter	7.95	12	\$7.95	\$95.40	\$0.00	\$95.40
Amstel Light Bottle	6.00	21	\$6.00	\$126.00	\$0.00	\$126.00
Apple Pie	3.50	10	\$3.50	\$35.00	\$0.00	\$35.00
Apricot Almond Croissant	8.45	1	\$8.45	\$8.45	\$0.00	\$8.45
Artichoke & Mozz Omelette	7.95	1	\$7.95	\$7.95	\$0.00	\$7.95
Asian CalamariApp	10.95	4	\$10.95	\$43.80	\$0.00	\$43.80
Asian Stir Fry Pasta DS	16.95	11	\$16.95	\$186.45	\$0.00	\$186.45
Asparagus & Mozz Omelette	7.50	1	\$7.50	\$7.50	\$0.00	\$7.50
Athenian Feta Crepes	9.95	2	\$9.95	\$19.90	\$0.00	\$19.90
B & B	8.00	1	\$8.00	\$8.00	\$0.00	\$8.00
B.L.T.	7.95	60	\$8.16	\$489.75	\$0.00	\$489.75

- View a sales breakdown of the restaurant's choices (item modifiers such as condiments and other optional add-ons)
- Sort by employee or view totals
- Breakdown by individual choices or choice sets

Choice Sales Alphabetical

Parameters: 1/1/2011 6:00:00 AM#4/1/2011 6:00:00 AM

Choice Name	Choice Quantity	Average Price	Total
** Add Cream Cheese (\$)	2.00	\$1.00	\$2.00
** No Powered Sugar	14.00	\$0.00	\$0.00
DO NOT MAKE	379.00	\$0.00	\$0.00
MAKE TO GO/TAKEOUT	577.70	\$0.00	\$0.00
**ADD ANCHOVIES	1.00	\$1.25	\$1.25
**ADD Avocado	21.00	\$2.00	\$42.00
**ADD Bacon	178.00	\$1.75	\$311.50
**ADD BUTTER	1.00	\$0.00	\$0.00
**ADD CHEESE	541.00	\$0.75	\$405.75
**ADD Creamcheese	4.00	\$1.00	\$4.00
**ADD Guacamole	8.00	\$1.50	\$12.00
**ADD MUSHROOMS	33.00	\$1.00	\$33.00
**ADD OLIVES	19.00	\$1.00	\$19.00
**ADD ONIONS	53.00	\$0.00	\$0.00
**ADD PEPPERS	18.00	\$1.00	\$18.00
**ADD Sourcream	3.00	\$1.00	\$3.00
**As Appetizer	1390.00	\$0.00	\$0.00
**No Anchovies	390.00	\$0.00	\$0.00
**NO AVOCADO	2.00	\$0.00	\$0.00
**No Bacon	64.00	\$0.00	\$0.00
**No Bread	185.95	\$0.00	\$0.00
**No Broccoli	2.00	\$0.00	\$0.00
**No Brown Gravy	4.00	\$0.00	\$0.00
**No Butter	5.00	\$0.00	\$0.00
**No Cheese	281.95	\$0.00	\$0.00
**No Chicken	37.00	\$0.00	\$0.00
**No Cole Slaw	65.00	\$0.00	\$0.00
**No Cucumbers	10.00	\$0.00	\$0.00
**No Dressing	294.75	\$0.00	\$0.00
**No Fries	521.75	\$0.00	\$0.00
**No Garden	104.00	\$0.00	\$0.00

DISCOUNTS BY CLASS BY TYPE SUMMARY

Discounts by type summary.

Discounts By Class By Type Summary

Parameters: 1/1/2011 6:00:00 AM#6/2/2011 9:02:13 PM

<u>Discount Name</u>	<u>Discount Value</u>
Beer	
Automatic Discount	
HH 2OFF	\$2,018.00
Automatic Discount Total:	\$2,018.00
Manual Discount	
\$50 Off	\$1.58
Employee Discount	\$38.50
OPEN DISCOUNT	\$27.39
Police Discount	\$6.00
Manual Discount Total:	\$73.47
Beer Total:	\$2,091.47
Food	
Automatic Discount	
HH App	\$2,201.90
Automatic Discount Total:	\$2,201.90
Manual Discount	
\$0.01 Off	\$0.01
\$0.25 Off	\$1.63
\$1 Off	\$6.79
\$10 Off	\$26.67
\$100.00 Catering Deposit	\$85.12
\$15 Off	\$8.40
\$2 Off	\$14.44
\$3 Off	\$3.00
\$4 Off	\$12.00
\$5 Off	\$13.98
\$50 Off	\$97.34
100% Comp	\$544.86
5% DISCOUNT	\$2.70
50% Discount	\$73.40
Employee Discount	\$1,157.38
OPEN DISCOUNT	\$556.61
Police Discount	\$385.16
Tax Equivalent Discount	\$8.15
Manual Discount Total:	\$2,997.64
Food Total:	\$5,199.54
Liquor	
Automatic Discount	
HH 2OFF	\$974.00
HH 3OFF	\$282.00
HH Cocktail	\$246.00
Automatic Discount Total:	\$1,502.00

DISCOUNTS BY CLASS BY TYPE SUMMARY (continued)

<u>Discount Name</u>	<u>Discount Value</u>
Manual Discount	
\$100.00 Catering Deposit	\$14.88
\$15 Off	\$1.02
100% Comp	\$19.00
Employee Discount	\$95.50
OPEN DISCOUNT	\$18.57
Police Discount	\$29.50
Manual Discount Total:	\$178.47
Liquor Total:	\$1,680.47
Non Alc Bev	
Manual Discount	
\$0.25 Off	\$.12
\$1 Off	\$.21
\$10 Off	\$3.33
\$15 Off	\$1.62
\$2 Off	\$1.13
\$5 Off	\$1.02
\$50 Off	\$1.08
100% Comp	\$13.75
5% DISCOUNT	\$.28
50% Discount	\$2.75
Employee Discount	\$64.34
OPEN DISCOUNT	\$16.03
Police Discount	\$23.34
Manual Discount Total:	\$129.00
Non Alc Bev Total:	\$129.00
Wine	
Automatic Discount	
HH 3OFF	\$867.00
Automatic Discount Total:	\$867.00
Manual Discount	
\$15 Off	\$3.96
\$2 Off	\$.43
Employee Discount	\$37.25
OPEN DISCOUNT	\$33.39
Police Discount	\$3.50
Manual Discount Total:	\$78.53
Wine Total:	\$945.53
Grand Total	\$10,046.01

DISCOUNTS BY CLASS BY ITEM SUMMARY

Discounts by item summary.

Discounts By Class By Item Summary

Parameters: 5/23/2011 6:00:00 AM#5/30/2011 6:00:00 AM

<u>Menu Item</u>	<u>Quantity</u>	<u>Discount Value</u>
Automatic Discount		
Beer		
HH Blue Moon Pint	13	\$26.00
HH Bud Light Pint	43	\$86.00
HH Bud Pint	12	\$24.00
HH Dom Bottled Beer	35	\$70.00
HH Guinness Pint	4	\$8.00
HH Imp Bottle Beer	16	\$32.00
HH Sam Adams Pint	5	\$10.00
HH Stella Pint	1	\$2.00
	Rev. Class Total	\$258.00
Food		
HH Avocado Spring Rolls	2	\$9.90
HH Buffalo Calamari	2	\$11.90
HH Chicken Fingers	5	\$24.75
HH Crispy Wonton Lobster Salad	2	\$13.90
HH Duck Quesadilla	3	\$14.85
HH Egg Roll Sampler	2	\$9.90
HH Fried Calamari	3	\$17.85
HH Hummus with Pita Chips	3	\$5.85
HH Personal Pizza	1	\$2.95
HH Seafood Nachos	2	\$9.90
HH Sliders (3) w/ Fries	11	\$55.20
HH Tuna & Crab Roll Tempura	2	\$11.90
HH Wings	9	\$35.55
	Rev. Class Total	\$224.40
Liquor		
HH Call Mixed Drink	11	\$22.00
HH Coconut Cosmopolitan	1	\$3.00
HH Coors Pint	14	\$28.00
HH House Drink	1	\$3.00
HH Mango Sling	2	\$6.00
HH Prem Mixed Drink	7	\$14.00
HH Premium Martini	3	\$6.00
HH Radeberger	28	\$56.00
	Rev. Class Total	\$138.00
Wine		
HH Glass Wine	29	\$87.00
	Rev. Class Total	\$87.00
	Automatic Discount Total:	\$707.40
Manual Discount		
Beer		
Heineken Bottle	4	\$6.00

DISCOUNTS BY CLASS BY ITEM SUMMARY (continued)

<u>Menu Item</u>	<u>Quantity</u>	<u>Discount Value</u>
	Rev. Class Total	\$6.00
Food		
16 oz. Cowboy Rib-Eye Steak	1	\$5.06
Baked Tilapia w/ Crabmeat LS	1	\$2.95
Belgian Waffle Reg Menu	1	\$0.82
Bowl Chicken Soup	2	\$2.10
Breakfast Sp#1 Two Eggs	1	\$0.90
Breakfast Sp#7 Fr Tst Deluxe	1	\$1.10
Brownie	1	\$0.81
Brownie Sundae	1	\$1.49
Chicken Cashew Spring Rolls	1	\$2.49
Chicken Pot Pie LS	1	\$2.74
Cinnamon Fr Toast	2	\$1.33
Classic Cheese Burger	1	\$0.83
Classic Grilled Chicken	1	\$2.24
Coffee	9	\$1.29
Corn Muffin	1	\$0.06
English Muffin	1	\$0.15
Fried Calamari	2	\$5.47
Greek Burger	1	\$2.24
Greek Salad	1	\$1.19
Grilled Pork Chop	1	\$3.79
Hummus Platter	1	\$2.49
Ice Cream	2	\$1.66
Italiano Panini	1	\$2.99
Kid's Chicken Fingers	2	\$2.45
Kid's Turkey Meal	1	\$1.74
LN Ceasar with Gr Chicken	1	\$3.48
LN Classic Burger	3	\$8.52
LN Fries	1	\$1.06
LN Gyro Platter	1	\$3.24
LN Italiano Panini	1	\$3.80
LN Ribeye Steak Melt	1	\$2.98
LN Z-One Burger	1	\$2.74
LN Z-One Nachos	1	\$2.49
Mac and Cheese Bites	1	\$1.98
Mediterranean Salad	3	\$5.99
Mini Burgers	1	\$2.49
Mozzarella and Roasted Peppers	1	\$2.49
Mozzarella Sticks	1	\$2.24
Napoleon	1	\$0.83
Northeast Roast Beef Wrap	1	\$3.05
Oatmeal	1	\$0.13
Open Food	20.40	\$4.91
Own Omelette	3	\$4.90
Raspberry Tart	2	\$1.67
Salmon Arugula Salad	1	\$0.49
SD ORDER Vegetable	1	\$0.62
Seafood Pasta LS	1	\$3.58
Shrimp Salad Club Triple Decker	1	\$0.39
Sm Greek Salad	1	\$1.74

DISCOUNTS BY CLASS BY ITEM SUMMARY (continued)

<u>Menu Item</u>	<u>Quantity</u>	<u>Discount Value</u>
Texmex Egg Roll	1	\$2.24
Tuna Salad Sandwich	1	\$2.30
TURKEY SANDWICH	2	\$3.40
Two Eggs	2	\$1.80
	Rev. Class Total	\$125.93
Liquor		
House Vodka	2	\$3.00
Jameson's	3	\$5.25
Open Bar	77	\$19.25
	Rev. Class Total	\$27.50
Non Alc Bev		
Cappuccino	2	\$1.87
Grapefruit Juice	1	\$0.20
Half Grapefruit	1	\$0.22
Iced Tea	1	\$0.66
Melon w/ Cottage Cheese M-F	2	\$2.18
Seltzer	2	\$0.26
Soda	4	\$2.30
	Rev. Class Total	\$7.69
Wine		
Glass Chardonnay	1	\$1.75
Glass Merlot	1	\$1.75
Glass Pinot Grigio	2	\$3.50
	Rev. Class Total	\$7.00
	Manual Discount Total:	\$174.12
	Grand Total	\$881.52

Determine the most popular sections in the restaurant (i.e., bar, dining room, patio).

Seating Performance Detail

Parameters: 6/1/2011 6:00:00 AM#6/2/2011 6:00:00 AM

	Ticket #	Table Name	Total Item Sales Job Name	Per Cover Avg.	Covers
June					
Wednesday					
All Restaurant					
10:00					
	266364	TAKEOUT 11	\$6.50 Host	\$6.50	1
	266365	Delivery 7	\$12.90 Host	\$12.90	1
	266366	302	\$18.53 SERVER	\$9.27	2
	266367	21	\$11.45 SERVER	\$5.73	2
	266368	44	\$28.15 SERVER	\$9.38	3
	266369	TAKEOUT 6	\$4.50 Host	\$4.50	1
	266370	14	\$27.18 SERVER	\$13.59	2
	266371	94	\$68.25 SERVER	\$5.69	12
	266372	54	\$15.65 SERVER	\$7.83	2
	266373	38	\$39.70 SERVER	\$39.70	1
	266374	15	\$13.00 SERVER	\$6.50	2
	266375	304	\$10.45 SERVER	\$5.23	2
	266376	305	\$37.80 SERVER	\$9.45	4
	266377	46	\$11.70 SERVER	\$5.85	2
	266378	12	\$7.45 SERVER	\$3.73	2
	266379	16	\$10.85 SERVER	\$5.43	2
	266380	24	\$25.55 SERVER	\$12.78	2
	266382	56	\$10.00 SERVER	\$5.00	2
	266383	52	\$13.00 SERVER	\$6.50	2
	266384	32	\$7.05 SERVER	\$7.05	1
	266385	71	\$6.50 SERVER	\$6.50	1
	266386	45	\$15.90 SERVER	\$7.95	2
	266387	37	\$17.30 SERVER	\$8.65	2
	266388	25	\$25.85 SERVER	\$5.17	5
	266389	14:2	\$11.75 SERVER	\$5.88	2
	266390	11	\$15.50 SERVER	\$7.75	2
	266391	TAKEOUT 6	\$9.18 Host	\$9.18	1
	266392	23	\$15.60 SERVER	\$7.80	2

▪ LABOR

▶ LABOR REPORTS SCREEN

Controlling the labor in your restaurant is one of the most important ways of increasing profitability. Restaurants often have no indication of how much their labor is costing them as a percentage of sales. The Harbortouch system's built in time clock is an easy way to manage your labor and complete your payroll.



PAYROLL

- ▶ View payroll summary or detailed breakdown
- ▶ View payroll for hours worked or by shift
- ▶ Compare payroll costs to sales

EMPLOYEE DIRECTORY

- ▶ View detailed information for all employees (contact information, birthday, permissions, etc.)

JOBS

- ▶ View all job types and which employees are associated with each

■ PRODUCT MIX

▶ PRODUCT MIX SCREEN

Product mix reports show a detailed analysis of what you are selling and when it is selling. Restaurants often use this report to analyze various sales trends and adjust their menu accordingly.



- Identify best selling and slow moving products
- Sort by group or individual menu item

Basic Product Mix

Parameters: 6/1/2011 6:00:00 AM#6/2/2011 6:00:00 AM

	Gross Sales	Manual Discounts	Auto Discounts	Net Sales
Unassigned Revenue				
Food				
None	\$838.55	\$.00	\$.00	\$838.55
Breakfast Omelette	\$61.55	\$.00	\$.00	\$61.55
Lunch Specials New	\$17.90	\$.00	\$.00	\$17.90
Total Food	\$918.00	\$.00	\$.00	\$918.00
Non Alc Bev				
None	\$42.75	\$.00	\$.00	\$42.75
Total Non Alc Bev	\$42.75	\$.00	\$.00	\$42.75
Total Unassigned Revenue	\$960.75	\$.00	\$.00	\$960.75
Delivery				
Food				
None	\$30.85	\$.00	\$.00	\$30.85
Breakfast Omelette	\$9.48	\$.00	\$.00	\$9.48
Total Food	\$40.33	\$.00	\$.00	\$40.33
Total Delivery	\$40.33	\$.00	\$.00	\$40.33
Grand Total	\$1,001.08	\$.00	\$.00	\$1,001.08

DAY PART PRODUCT MIX

- ▶ See which products are selling at different times of the day
- ▶ Sort by group or individual menu item

PRODUCT SALES BY EMPLOYEE

- ▶ See which employees are selling which menu items

View a list of all menu items.

Plain Menu

Item Name	Item Price	Cost	Revenue Class	Item Group
Classic Cheese Burger	\$7.95	\$0.00	Food	Lunch Specials (\$9.95)
Mac and Cheese Bites	\$7.95	\$0.00	Food	None
Texmex Egg Roll	\$8.95	\$0.00	Food	None
Chicken Wings	\$8.95	\$0.00	Food	None
Z-One Sampler	\$16.95	\$0.00	Food	None
Mini Burgers	\$9.95	\$0.00	Food	None
Chicken Fingers	\$9.95	\$0.00	Food	None
Fried Calamari	\$10.95	\$0.00	Food	None
Mozzarella and Roasted Peppers	\$9.95	\$0.00	Food	None
Crab Cake Appetizer	\$10.95	\$0.00	Food	None
Jalapeno Cheddar Bites	\$8.95	\$0.00	Food	None
Shrimp Cocktail	\$11.95	\$0.00	Food	None
Mozzarella Sticks	\$8.95	\$0.00	Food	None
Blackened Quesadilla	\$9.95	\$0.00	Food	None
Mussels	\$9.95	\$0.00	Food	None
Chicken Tenders	\$8.95	\$0.00	Food	None
Buffalo Chicken Tenders	\$8.95	\$0.00	Food	None
Z-One Nachos	\$8.95	\$0.00	Food	None
Firecracker Salmon Roll	\$9.95	\$0.00	Food	None
Chicken Cashew Spring Rolls	\$9.95	\$0.00	Food	None
Coconut Shrimp	\$10.95	\$0.00	Food	None
SD ORDER Vegetable	\$2.95	\$0.00	Food	None
Shrimp and Crab Springroll	\$10.95	\$0.00	Food	None
Spinach Pie	\$6.95	\$0.00	Food	None
Tuna and Crab Roll Tempura	\$10.95	\$0.00	Food	None
SD ORDER Sweet Potato Fries	\$5.95	\$0.00	Food	None
SD ORDER Curly Fries	\$5.95	\$0.00	Food	None
Mini Chicken Poppers	\$7.95	\$0.00	Food	None
SD ORDER Onion Rings	\$4.95	\$0.00	Food	None
House Salad	\$3.95	\$0.00	Food	None
Chicken Fingers - Bar	\$9.95	\$0.00	Food	None
House Vodka	\$0.00	\$0.00	Liquor	None
Absolut	\$0.00	\$0.00	Liquor	None

* The "Item Price" of an item that has hidden taxes applied will display the price of the tax removed.

View which choices and choice sets are associated with which menu items

- For example, "Burger Condiments" and "Meat Temperature" are both associated with hamburgers and cheeseburgers

Choice Sets with Menu Items

Choice Group	Item Name	Price	Cost	Revenue Class	Item Group
**ADD					
	Angel Hair Clam Sauce DS	\$.00	\$.00	Food	Dinner Specials
	Asian Stir Fry Pasta DS	\$16.95	\$.00	Food	Dinner Specials
	B.L.T. LS	\$8.95	\$.00	Food	Lunch Specials New
	B.T.O. Omelette	\$7.98	\$.00	Food	Breakfast Omelette
	Baked Crab Cake LS	\$12.95	\$.00	Food	Lunch Specials New
	Baked Tilapia w/ Crabmeat LS	\$13.95	\$.00	Food	Lunch Specials New
	Baked Ziti w/ Meatballs LS	\$12.95	\$.00	Food	Lunch Specials New
	Blackened Chicken Wrap	\$10.95	\$.00	Food	Wraps
	blank4-	\$12.95	\$.00	Food	Lunch Specials New
	Brie Panini	\$11.95	\$.00	Food	Paninis
	Broiled Chopped Steak DS	\$16.95	\$.00	Food	Dinner Specials
	Cajun Chicken Sourdough LS	\$12.95	\$.00	Food	Lunch Special (\$12.95)
	California Steak Panini LS	\$12.95	\$.00	Food	Lunch Special (\$12.95)
	California Turkey Wrap	\$10.95	\$.00	Food	Wraps
	California Turkey Wrap H	\$11.95	\$.00	Food	Wraps
	Ch Ravioli MB & Saus DS	\$.00	\$.00	Food	Dinner Specials
	Chicken Cacciatore LS	\$12.95	\$.00	Food	Lunch Specials New
	Chicken Cordon Bleu Panini	\$11.95	\$.00	Food	Paninis
	Chicken Enchiladas DS	\$16.95	\$.00	Food	Dinner Specials
	Chicken Fajitas DS	\$16.95	\$.00	Food	Dinner Specials
	Chicken Fajitas LS	\$12.95	\$.00	Food	Lunch Specials New
	Chicken Francaise LS	\$12.95	\$.00	Food	Lunch Specials New
	Chicken Marsala LS	\$12.95	\$.00	Food	Lunch Specials New
	Chicken Parmigiana DS	\$16.95	\$.00	Food	Dinner Specials
	Chicken Parmigiana LS	\$12.95	\$.00	Food	Lunch Specials New
	Chicken Pot Pie DS	\$16.95	\$.00	Food	Dinner Specials
	Chicken Pot Pie LS	\$12.95	\$.00	Food	Lunch Specials New
	Chicken Salad Platter LS	\$10.95	\$.00	Food	Lunch Specials New
	Chicken Salad Sandwich LS	\$8.95	\$.00	Food	Lunch Specials

View which menu items are associated with which screen categories

- For example, Chicken Francais, Chicken Parmesan and Chicken Marsala are all listed in the "Chicken" screen category

Menu By Name With Screen Categories

Item Name	Screen Category	Price	Cost	Revenue Class	Item Group
007	House Mixed Drinks	\$8.00	\$0.00	Liquor	
1/2 Roasted Chicken	Entrees	\$13.95	\$0.00	Food	
1/2 Roasted Duck	Daily Dinner Specials	\$15.95	\$0.00	Food	
10 Cane Rum	Rum	\$0.00	\$0.00	Liquor	
16 oz. Cowboy Rib-Eye Steak	Entrees	\$23.95	\$0.00	Food	
1800 Anejo	Tequila	\$0.00	\$0.00	Liquor	
3 Olives	Vodka	\$0.00	\$0.00	Liquor	
A la Mode	Desserts	\$1.95	\$0.00	Food	
A la Mode	Holiday Dessert	\$1.95	\$0.00	Food	
Absolut	Vodka	\$0.00	\$0.00	Liquor	
Adult Buffet	Holiday Buffet	\$12.95	\$0.00	Food	
Ahi Tuna	Entrees	\$22.95	\$0.00	Food	
Alabama Slammer	House Mixed Drinks	\$8.00	\$0.00	Liquor	
Amaretto Di Sarrono	Cordials	\$0.00	\$0.00	Liquor	
Amaretto Sour	House Mixed Drinks	\$8.00	\$0.00	Liquor	
Amarone, Bolla	Bottled Wine	\$69.00	\$0.00	Wine	
American Cheese Omelette	M-F Brfst Wraps & Omelettes	\$6.95	\$0.00	Food	
Americana Sliced Fresh Fruit Platter	Salads	\$7.95	\$0.00	Food	
Amstel Light Bottle	Beer	\$6.00	\$0.00	Beer	
Angel Hair Clam Sauce DS	Dinner Specials	\$16.95	\$0.00	Food	Dinner Specials
Apple Cinnamon Crepes	Brfst Hs Fav...etc	\$8.45	\$0.00	Food	
Apple Cranberry Pancakes	Brfst Pnck, Fr Tst & Waffles	\$7.50	\$0.00	Food	
Apple Juice	Brfst Fruit & Juice	\$2.65	\$0.00	Non Alc Bev	
Apple Juice Large M-F	M-F Brfst Fruit & Juices	\$2.95	\$0.00	Non Alc Bev	
Apple Juice Sm M-F	M-F Brfst Fruit & Juices	\$1.95	\$0.00	Non Alc Bev	
Apple Pie	Desserts	\$3.50	\$0.00	Food	
Apple Pie H	Holiday Dessert	\$3.95	\$0.00	Food	
Apricot Almond Croissant	Brfst Hs Fav...etc	\$8.45	\$0.00	Food	
Ardmore	Scotch and Whiskey	\$0.00	\$0.00	Liquor	
Artichoke & Mozz Omelette	M-F Brfst Wraps & Omelettes	\$7.95	\$0.00	Food	

DETAILED MENU VIEW

- View an outline of your entire menu

VIEW MENU BREAKDOWNS

- View which choices are associated with which choice sets
 - For example: tomato, lettuce, onion and pickles are all in the "Burger Condiments" choice set
- View which menu items are associated with which item groups
 - For example: lobster, salmon and sea bass are all listed in the "Seafood" group

▪ AUDITING

▶ AUDITING REPORT SCREEN

This report group allows the owner to look at daily cash reports and details on all voids and discounts. This type of detailed tracking truly lets the operator know what is going on financially in his or her restaurant.



▶ CASH PAID OUT BY DAY

Track amount of cash paid in and out.

Paid Out By Day

Parameters: 1/1/2011 6:00:00 AM#4/1/2011 6:00:00 AM

When	Description	Amount
1/23/2011 11:34:22AM		
1/23/2011 11:34:22AM	BLEED DRAW BOBBY	\$1,050.00
1/23/2011 13:11:21PM	BLEED DREW BOBBY	\$570.00
	Count: 2	1.25% \$1,620.00 .15%
1/28/2011 11:11:56PM		
1/28/2011 11:11:56PM	BleedDrew B0bby	\$1,050.00
1/28/2011 12:47:16PM	BleedDrew B0bby	\$560.00
	Count: 2	1.25% \$1,610.00 .15%
2/28/2011 13:50:21PM		
2/28/2011 13:50:21PM	GRINDING SERVICE	\$40.00
2/28/2011 13:50:38PM	KNIVES	\$34.00
2/28/2011 13:51:02PM	BREAD SAL	\$423.00
2/28/2011 13:51:29PM	GIFT CARD DONATION	\$25.00
2/28/2011 14:25:33PM	No reason specified	\$1,000.00
	Count: 5	3.13% \$1,522.00 .15%
3/3/2011 11:50:35PM		
3/3/2011 11:50:35PM	No reason specified	\$900.00
3/3/2011 11:51:46PM	No reason specified	\$.01
3/3/2011 14:15:04PM	BOB	\$750.00
	Count: 3	1.88% \$1,650.01 .16%
3/4/2011 11:55:02PM		
3/4/2011 11:55:02PM	BOB	\$1,800.00
3/4/2011 12:52:25PM	BOB	\$300.00
	Count: 2	1.25% \$2,100.00 .20%
3/6/2011 12:20:24PM		
3/6/2011 12:20:24PM	BOB	\$1,150.00
	Count: 1	0.63% \$1,150.00 .11%
		Total: \$9,652.01

- View detailed breakdown of payment types (credit, debit, cash, checks and gift cards)
- View breakdown by employee

Tender Detail (all)

Parameters: 6/1/2011 6:00:00 AM#6/2/2011 6:00:00 AM

Ticket ID	Employee	Reason/Auth	Tender Amount	Tip Amount	Change Amount	Total Paid	
Amex							
266347	6/1/20119:32:54AM	sallie	Amex: 582307	\$14.38	\$3.00	\$0.00	\$11.38
266354	6/1/201110:16:14AM	sallie	Amex: 521627	\$40.62	\$6.00	\$0.00	\$34.62
Tender Total			\$55.00	\$9.00	\$0.00	\$46.00	
cash							
266331	6/1/20117:17:07AM	sallie		\$10.29	\$0.00	\$0.00	\$10.29
266332	6/1/20117:38:54AM	sallie		\$7.08	\$0.00	\$0.00	\$7.08
266337	6/1/20118:06:22AM	sallie		\$8.00	\$0.00	\$0.00	\$8.00
26633E	6/1/20118:06:33AM	sallie		\$8.00	\$0.00	\$0.00	\$8.00
266334	6/1/20118:32:15AM	sallie		\$8.38	\$0.00	\$0.00	\$8.38
26633E	6/1/20118:32:58AM	sallie		\$7.62	\$0.00	\$0.00	\$7.62
266341	6/1/20118:33:16AM	sallie		\$9.53	\$0.00	\$0.00	\$9.53
26634C	6/1/20118:34:14AM	sallie		\$10.89	\$0.00	\$0.00	\$10.89
266333	6/1/20118:38:15AM	sallie		\$7.08	\$0.00	\$0.00	\$7.08
26633E	6/1/20118:38:19AM	sallie		\$4.90	\$0.00	\$0.00	\$4.90
266342	6/1/20118:46:27AM	sallie		\$26.89	\$0.00	\$0.00	\$26.89
266343	6/1/20119:08:01AM	sallie		\$4.90	\$0.00	\$0.00	\$4.90
26634E	6/1/20119:19:28AM	sallie		\$8.66	\$0.00	\$0.00	\$8.66
26634E	6/1/20119:25:06AM	sallie		\$14.64	\$0.00	\$0.00	\$14.64
266352	6/1/20119:35:36AM	sallie		\$22.16	\$0.00	\$0.00	\$22.16
26635C	6/1/20119:36:09AM	sallie		\$10.89	\$0.00	\$0.00	\$10.89
266351	6/1/20119:36:36AM	sallie		\$9.80	\$0.00	\$0.00	\$9.80
26635E	6/1/20119:47:10AM	sallie		\$3.21	\$0.00	\$0.00	\$3.21
266353	6/1/20119:53:46AM	sallie		\$10.51	\$0.00	\$0.00	\$10.51
266357	6/1/20119:54:41AM	sallie		\$7.57	\$0.00	\$0.00	\$7.57
26635E	6/1/20119:58:38AM	sallie		\$14.64	\$0.00	\$0.00	\$14.64
266364	6/1/201110:00:14AM	sallie		\$7.08	\$0.00	\$0.00	\$7.08
26635E	6/1/201110:12:27AM	sallie		\$9.31	\$0.00	\$0.00	\$9.31
266361	6/1/201110:17:48AM	sallie		\$14.64	\$0.00	\$0.00	\$14.64
26636C	6/1/201110:19:23AM	sallie		\$20.85	\$0.00	\$0.00	\$20.85
26636E	6/1/201110:24:50AM	sallie		\$4.90	\$0.00	\$0.00	\$4.90
26636E	6/1/201110:39:09AM	sallie		\$20.17	\$0.00	\$0.00	\$20.17
266367	6/1/201110:42:56AM	sallie		\$12.47	\$0.00	\$0.00	\$12.47
266362	6/1/201110:45:54AM	sallie		\$18.02	\$0.00	\$0.00	\$18.02
266391	6/1/201110:54:06AM	sallie		\$9.99	\$0.00	\$0.00	\$9.99
26635E	6/1/201110:55:44AM	sallie		\$29.23	\$0.00	\$0.00	\$29.23
266377	6/1/201110:59:16AM	sallie		\$12.74	\$0.00	\$0.00	\$12.74
266371	6/1/201111:00:02AM	sallie		\$74.31	\$0.00	\$0.00	\$74.31
26636E	6/1/201111:01:34AM	sallie		\$30.65	\$0.00	\$0.00	\$30.65
266383	6/1/201111:03:31AM	BEQ		\$14.15	\$0.00	\$0.00	\$14.15
26637E	6/1/201111:04:45AM	BEQ		\$11.81	\$0.00	\$0.00	\$11.81
26638E	6/1/201111:05:22AM	BEQ		\$7.08	\$0.00	\$0.00	\$7.08
26637C	6/1/201111:10:21AM	BEQ		\$29.59	\$0.00	\$0.00	\$29.59
266372	6/1/201111:10:47AM	BEQ		\$17.04	\$0.00	\$0.00	\$17.04
26636E	6/1/201111:11:53AM	BEQ		\$14.04	\$0.00	\$0.00	\$14.04

▶ TENDER TYPE (continued)

Ticket ID	Employee	Reason/Auth	Tender Amount	Tip Amount	Change Amount	Total Paid	
266376	6/1/201111:12:47AM	BEQ	\$41.15	\$0.00	\$0.00	\$41.15	
266384	6/1/201111:15:16AM	BEQ	\$7.68	\$0.00	\$0.00	\$7.68	
266378	6/1/201111:15:36AM	BEQ	\$8.11	\$0.00	\$0.00	\$8.11	
266387	6/1/201111:16:16AM	BEQ	\$18.84	\$0.00	\$0.00	\$18.84	
266390	6/1/201111:22:33AM	sallie	\$16.88	\$0.00	\$0.00	\$16.88	
266392	6/1/201111:22:47AM	sallie	\$16.98	\$0.00	\$0.00	\$16.98	
266386	6/1/201111:23:08AM	sallie	\$17.31	\$0.00	\$0.00	\$17.31	
266388	6/1/201111:26:34AM	sallie	\$28.14	\$0.00	\$0.00	\$28.14	
266394	6/1/201111:27:49AM	sallie	\$14.15	\$0.00	\$0.00	\$14.15	
266389	6/1/201111:34:27AM	sallie	\$12.79	\$0.00	\$0.00	\$12.79	
266396	6/1/201111:36:59AM	sallie	\$11.65	\$0.00	\$0.00	\$11.65	
266397	6/1/201111:44:05AM	sallie	\$44.69	\$0.00	\$0.00	\$44.69	
266401	6/1/201111:44:34AM	sallie	\$10.92	\$0.00	\$0.00	\$10.92	
266398	6/1/201111:47:36AM	sallie	\$20.88	\$0.00	\$0.00	\$20.88	
Tender Total			\$843.88	\$0.00	\$0.00	\$843.88	
MasterCard							
266344	6/1/20119:01:28AM	JANINE F.	MasterCard:045614	\$16.05	\$2.50	\$0.00	\$13.55
266363	6/1/201110:48:52AM	sallie	MasterCard:094732	\$27.10	\$5.00	\$0.00	\$22.10
266393	6/1/201111:23:50AM	Danielle	MasterCard:116348	\$13.80	\$4.00	\$0.00	\$9.80
Tender Total			\$56.95	\$11.50	\$0.00	\$45.45	
VISA							
266339	6/1/20118:33:58AM	sallie	VISA: 983403	\$10.66	\$2.00	\$0.00	\$8.66
266349	6/1/20119:34:25AM	sallie	VISA: 143314	\$16.11	\$0.00	\$0.00	\$16.11
266345	6/1/20119:45:59AM	Nicole W.	VISA: 05141A	\$50.00	\$12.38	\$0.00	\$37.62
266374	6/1/201110:45:36AM	sallie	VISA: 014510	\$14.15	\$0.00	\$0.00	\$14.15
266375	6/1/201110:57:33AM	sallie	VISA: 001071	\$17.38	\$6.00	\$0.00	\$11.38
266382	6/1/201111:08:44AM	BEQ	VISA: 04361B	\$10.89	\$0.00	\$0.00	\$10.89
266396	6/1/201111:38:05AM	sallie	VISA: 03563B	\$15.00	\$0.00	\$0.00	\$15.00
266400	6/1/201111:39:46AM	BEQ	VISA: 001070	\$31.86	\$2.00	\$0.00	\$29.86
266401	6/1/201111:46:45AM	sallie	VISA: 024511	\$10.91	\$0.00	\$0.00	\$10.91
Tender Total			\$176.96	\$22.38	\$0.00	\$154.58	
Grand Total			\$1,132.79	\$42.88	\$0.00	\$1,089.91	

- View all past tickets
- View timesheet edit log
- Track changes made to the employee timesheet

Detailed Tickets

Parameters: 6/1/2011 6:00:00 AM#6/2/2011 6:00:00 AM

6/1/2011 6:59:03 AM

Tickets opened by: JANINE F.

Ticket: 266331

Table: 25

Created: Wednesday, 01 June 2011 06:59 AM

Item	Qty.	Price	Added By	When
Breakfast Sp#1 Two Eggs	1.00	\$6.50	JANINE F.	Wednesday, 01 June 2011 06:59 AM
Over Easy		\$0.00		
Bacon \$2 add		\$2.00		
Breakfast Sp#9 Fast Bite Muffin	1.00	\$2.95	JANINE F.	Wednesday, 01 June 2011 06:59 AM
Subtotal		\$9.45		
Taxes		\$0.84		
Tkt. Discounts		\$0.00		
Grand Total		\$10.29		

6/1/2011 7:25:40 AM

Tickets opened by: JANETTE

Ticket: 266332

Table: 45

Created: Wednesday, 01 June 2011 07:25 AM

Item	Qty.	Price	Added By	When
Breakfast Sp#1 Two Eggs	1.00	\$6.50	JANETTE	Wednesday, 01 June 2011 07:25 AM
Over Medium		\$0.00		
Bacon \$2 add		\$2.00		
Subtotal		\$6.50		
Taxes		\$0.58		
Tkt. Discounts		\$0.00		
Grand Total		\$7.08		

View orders in which tax was not included.

Tax Removals

Parameters: 1/1/2011 6:00:00 AM#4/1/2011 6:00:00 AM

Table	Removal Reason	Tax Amount	Ticket Closed
Employee: ANGELINA ROSE			
Tax: NYC Sales Tax			
701	Party	\$4.44	01/31/201109:07 AM
701	FFL	\$5.32	02/17/201111:39 AM
Total For NYC Sales Tax:		\$9.76	
Total removals by ANGELINA ROSE:		\$9.76	
Employee: beatrice			
Tax: NYC Sales Tax			
216	UT	\$29.91	03/26/201111:46 PM
Total For NYC Sales Tax:		\$29.91	
Total removalsby beatricec:		\$29.91	
Employee: BEQ			
Tax: NYC Sales Tax			
715	PA	\$17.75	01/14/201110:10 PM
704	YTR	\$2.22	02/11/201102:46 PM
711	PARTY@	\$8.87	02/20/201110:24 AM
704	YTR	\$14.55	02/23/201109:38 PM
Delivery 2	LL	\$8.87	03/19/201106:44 PM
Total For NYC Sales Tax:		\$52.26	
Total removalsby BEQ:		\$52.26	
Employee: Bobby			
Tax: NYC Sales Tax			
706	FAB	\$88.75	02/12/201111:28 AM
703	MANAGER	\$1.06	02/14/201103:08 PM
Total For NYC Sales Tax:		\$89.81	
Total removals by Bobby:		\$89.81	
Employee: ChristineR			
Tax: NYC Sales Tax			
714	PARTY	\$57.60	02/05/201103:35 PM
Total For NYC Sales Tax:		\$57.60	
Total removals by ChristineR:		\$57.60	

CASH DRAWERS

- Track cash drawer totals

CREDIT RETURNS

- View credit card returns

ORPHANED TICKETS

- View tickets which were not properly closed

TICKET MOVEMENT

- Track tickets that were transferred
- View by creator, last owner or acting user

VOIDS

- Sort by employee, void type or menu type

View breakdown of sales by customer.

Customer Item Sales Detail

Parameters: 1/1/2011 6:00:00 AM#4/1/2011 6:00:00 AM

Printed: 6/2/2011 9:03:39 PM

Customer	Item	Quantity Purchased
524 WESTCASWELL OFF RICHMOND	Classic Cheese Burger	1
	Mozzarellaand Roasted Peppers	1
59 CARNEGIE AVE BTWEEN RICHMOND AVE AND ARLENE STR	Italiano Panini	1
ADAM	B.L.T.	1
	Greek Salad w/ Spinach Pie	1
	Grilled Sliced Roumanian Steak Salad	1
	OpenFood	6.95
AIAMAS	Open Food	10.95
	SD ORDER Sweet Potato Fries	1
	TOGO House Salad	2
	Z-One Pasta	2
ALISA	Chicken Fingers	1
	Classic Cheese Burger	2
	SodaTo Go	3
ALLISON	Belgian Waffle Reg Menu	1
	Br HomeFries	1
	Classic Cheese Burger	1
	Fettuccine Chix Alfredo DS	1
ALYSSA	Classic Cheese Burger	2
	Z-One Sampler	1
ANGELA	Bowl Chicken Soup	1
	Chicken Parmigiana	1
	Classic Cheese Burger	1
	Grilled Chicken Wrap	2
	Seafood Pasta	1
	Stuffed Chicken Breast	1
	TOGO Chicken Soup	3
	Z-One Nachos	1
	ANGIE AND VICK	Angel Hair Clam Sauce DS
Open Food		22.95
ANGLINA	1/2 Roasted Chicken	1

View breakdown of payment types by customer.

Customer Payments Summary

Parameters: 2/12/2011 6:00:00 AM#4/13/2011 6:00:00 AM

Printed: 8/12/2011 10:25:46 AM

Membership ID	Customer	Tender Type	Payment	Tip
		cash :	\$15.24	\$0.00
		Totals:	\$15.24	\$0.00
<hr/>				
	524 WESTCASWELL OFF RICHMOND	cash :	\$19.49	\$0.00
	524 WESTCASWELL OFF RICHMOND	Totals:	\$19.49	\$0.00
<hr/>				
	59 CARNEGIE AVE BETWEEN RICHMOND AVE AND ARLENE STR	cash :	\$13.01	\$0.00
	59 CARNEGIE AVE BETWEEN RICHMOND AVE AND ARLENE STR	Totals:	\$13.01	\$0.00
<hr/>				
	ADAM	cash :	\$123.52	\$0.00
	ADAM	Totals:	\$123.52	\$0.00
<hr/>				
	ADRIENNE	cash :	\$31.41	\$0.00
	ADRIENNE	Totals:	\$31.41	\$0.00
<hr/>				
	AIAMAS	cash :	\$55.31	\$0.00
	AIAMAS	Totals:	\$55.31	\$0.00
<hr/>				
	ALANA	VISA:	\$24.97	\$3.00
	ALANA	Totals:	\$24.97	\$3.00
<hr/>				
	ALBA	cash :	\$19.49	\$0.00
	ALBA	Totals:	\$19.49	\$0.00
<hr/>				
	ALBERTON	cash :	\$36.80	\$0.00
	ALBERTON	Totals:	\$36.80	\$0.00
<hr/>				
	ALEX	cash :	\$30.97	\$0.00
	ALEX	Totals:	\$30.97	\$0.00
<hr/>				
	ALIS	cash :	\$15.17	\$0.00
	ALIS	Totals:	\$15.17	\$0.00
<hr/>				
	ALISA	cash :	\$55.11	\$0.00
		VISA:	\$17.10	\$3.00
	ALISA	Totals:	\$72.21	\$3.00
<hr/>				
	ALISE	cash :	\$23.84	\$0.00
	ALISE	Totals:	\$23.84	\$0.00
<hr/>				
	ALLISON	VISA:	\$156.44	\$0.00
	ALLISON	Totals:	\$156.44	\$0.00

CUSTOMER SUMMARY

- View summary of customers in the system

CUSTOMER DETAIL

- View detailed customer information

CREDIT CARD RECEIPTS

- View breakdown of payments by credit card type (Visa, MasterCard, Discover Network and American Express)

EMPLOYEE TIPS

- Breakdown by tender type for each employee

SECURITY ACCESS

- View which users have access to each security level